

# FOR LEASE



## Grant Park Retail / Café Space

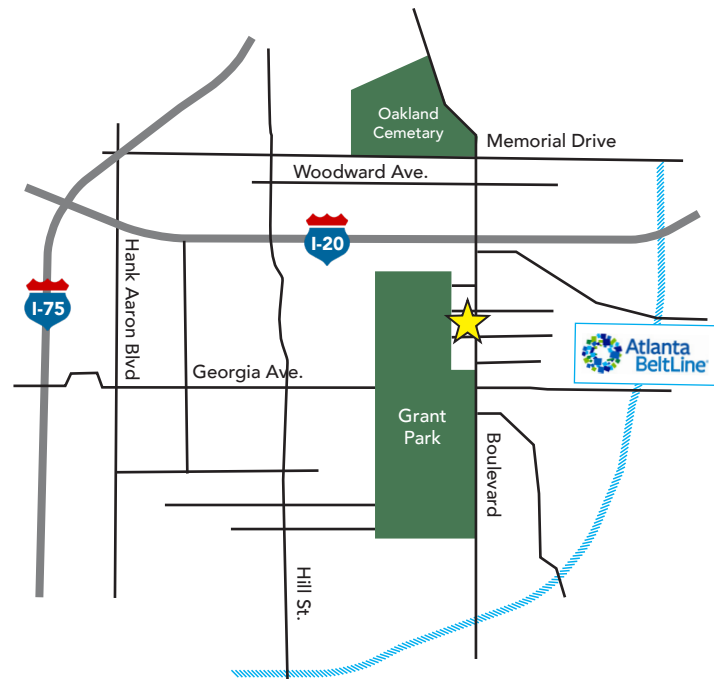
568 Boulevard SE, Atlanta, GA 30312

TAKE A  
VIRTUAL  
TOUR

1,694 SF  
\$32.50/SF Base Rent  
+ \$5.50/SF NNN Pass Thrus  
Total of \$5,364/Month

### PROPERTY OVERVIEW

- » Fabulous corner location in highly desirable Grant Park neighborhood
- » Co-tenancy with beloved neighborhood institution in Ziba's Restaurant & Wine Bar
- » Easy access to property not only from Grant Park, but also from many other intown enclaves such as Summerhill, O4W, Inman Park, Reynoldstown to name a few
- » Property enjoys tremendous proximity to the Beltline, Grant Park Zoo, EAV, Glenwood Park and Cabbagetown
- » Recently renovated including new HVAC



**FOR MORE INFORMATION:** Todd Semrau 404-371-4100 | [tsemrau@oakrep.com](mailto:tsemrau@oakrep.com)

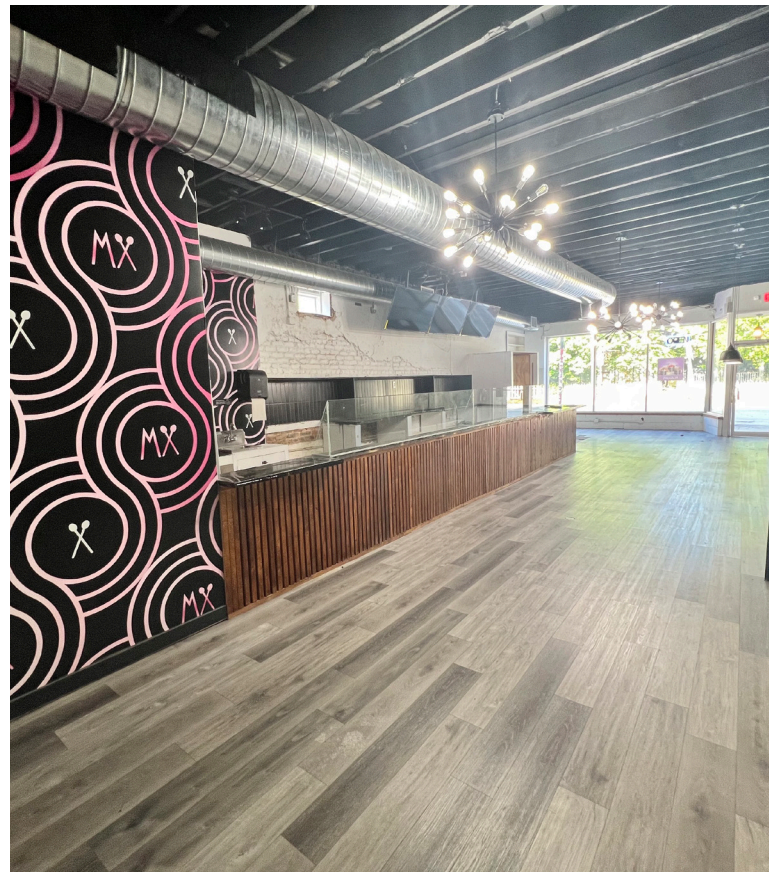
Information contained herein has been obtained from sources deemed reliable but we cannot guarantee its accuracy. No liability is assumed for errors or omissions.

# FOR LEASE



## Grant Park Retail / Café Space

568 Boulevard SE, Atlanta, GA 30312

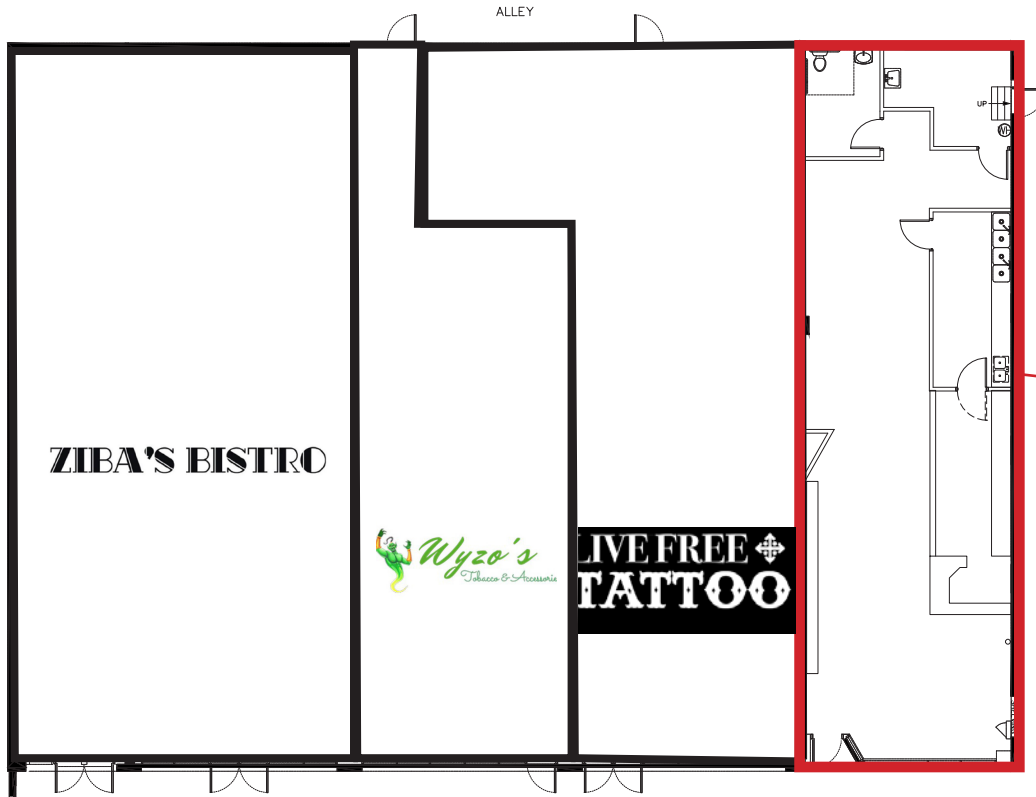


# FOR LEASE



## Grant Park Retail / Café Space

568 Boulevard SE, Atlanta, GA 30312



**AVAILABLE**  
**1,694 SF**  
**\$5,364/mo**

