

Riverside



New Mixed-Use Retail in Douglasville

3538 Highway 92, Douglasville, GA 30135



For more information contact: **Todd Semrau** | tsemrau@oakrep.com | (404) 371-4100

Property Highlights



316 apartment units



High Visibility



8,200 SF of retail



Ideal for restaurant, retailer, fitness, flex-office



Active retail submarket with shops and restaurants in high demand



High Traffic Counts – 30,600 vehicles per day at the corner of Riverside Pkwy. and Fairburn Rd.



Near to Six Flags, Sweetwater Creek State Park, Arbor Place Mall and Foxhall Resort

**DELIVERY
4TH QUARTER
2025**



FOR LEASE



OAKHURST
REALTY
PARTNERS

New Mixed-Use Retail in Douglasville

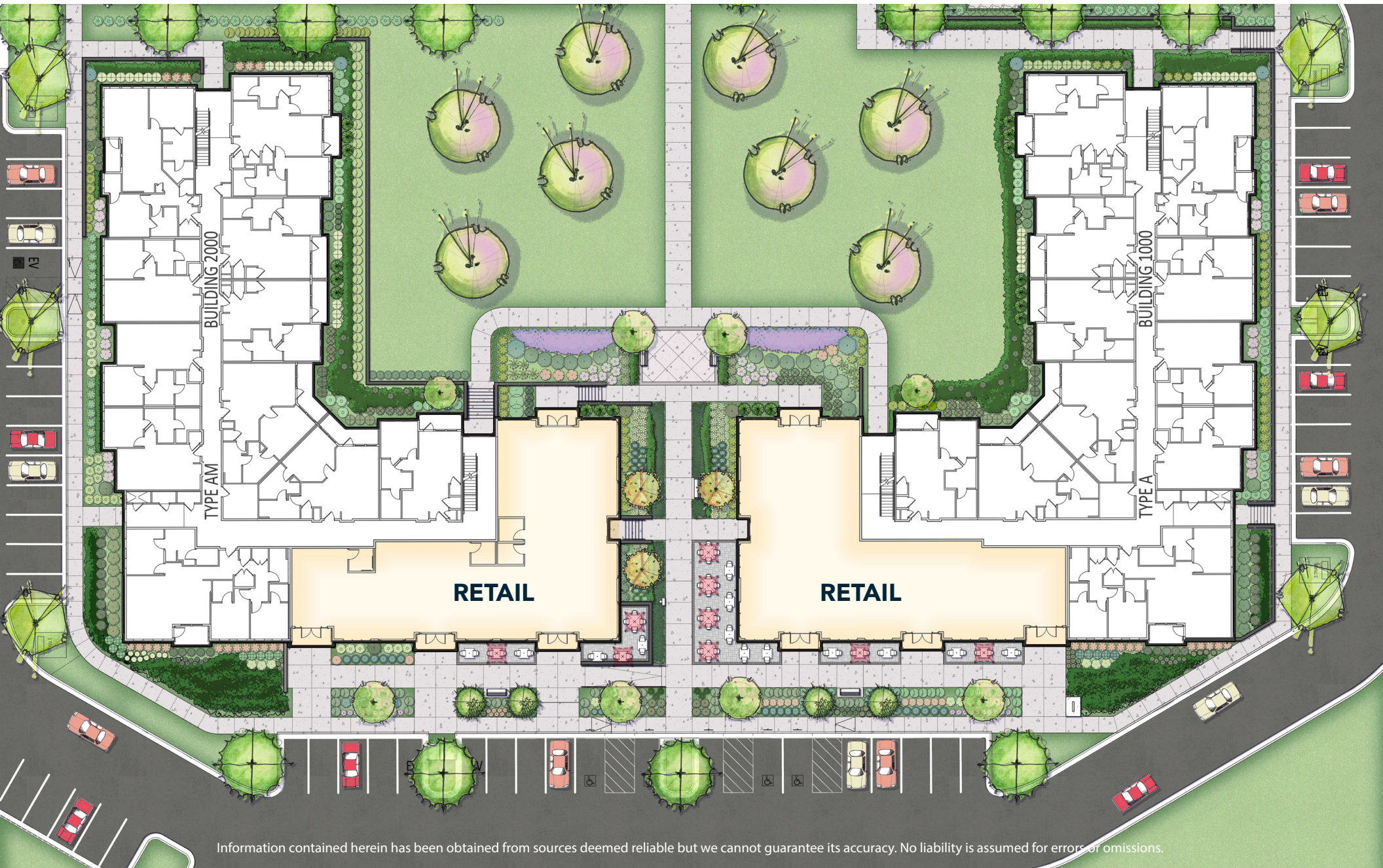


Information contained herein has been obtained from sources deemed reliable but we cannot guarantee its accuracy. No liability is assumed for errors or omissions.

FOR LEASE



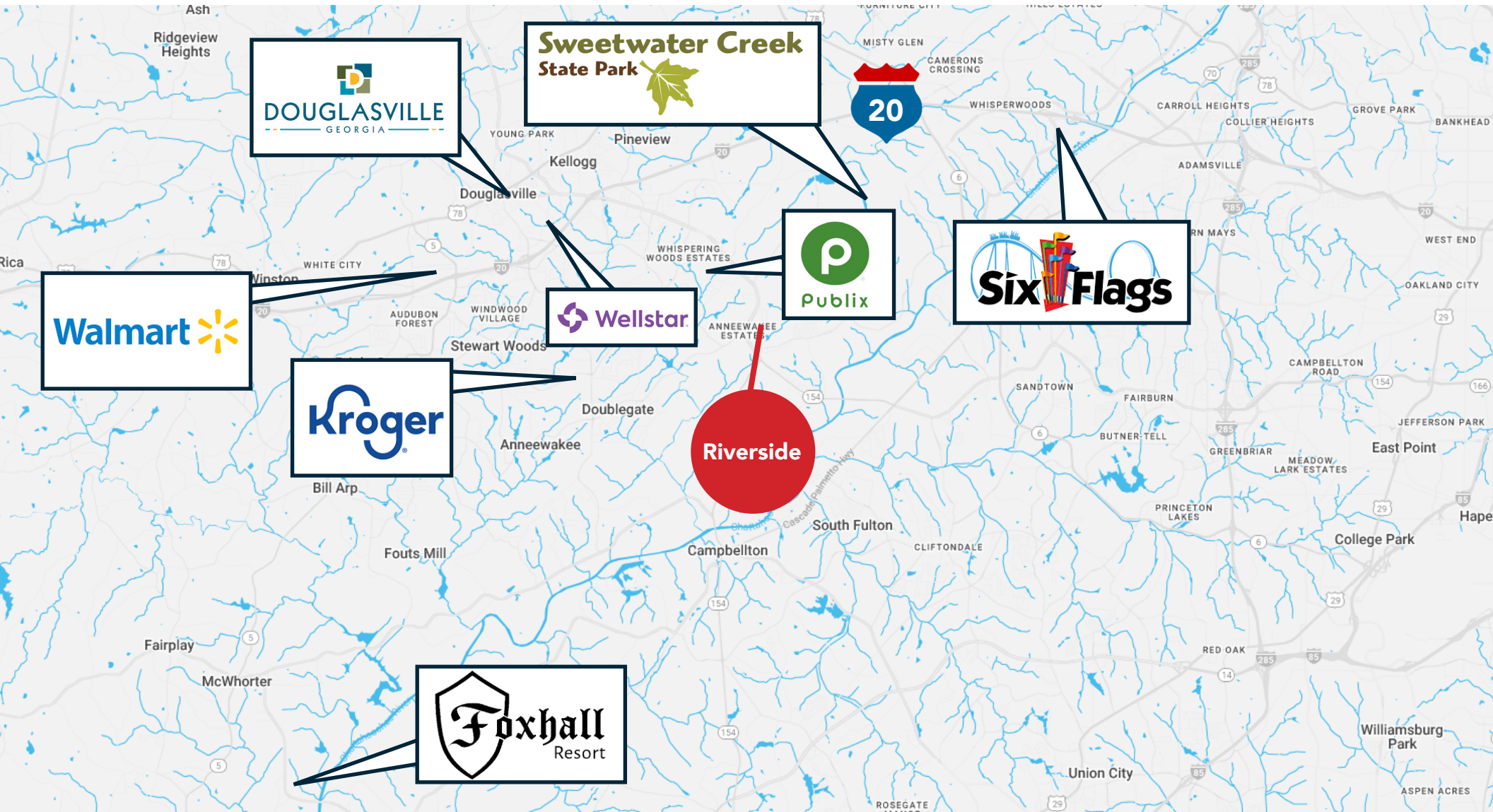
New Mixed-Use Retail in Douglasville



FOR LEASE



New Mixed-Use Retail in Douglasville



For more information contact: **Todd Semrau | tsemrau@oakrep.com | (404) 371-4100**

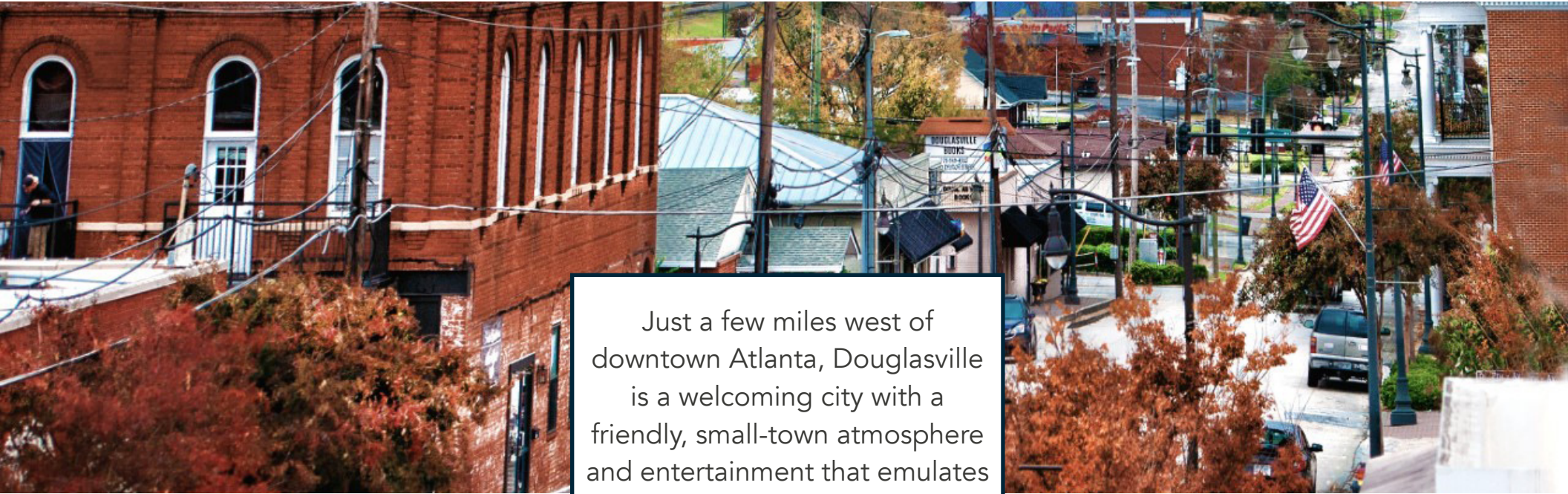
Information contained herein has been obtained from sources deemed reliable but we cannot guarantee its accuracy. No liability is assumed for errors or omissions.

FOR LEASE

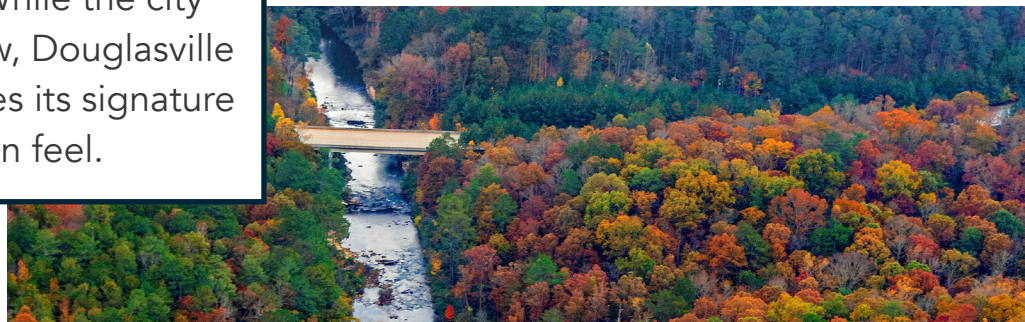


OAKHURST
REALTY
PARTNERS

New Mixed-Use Retail in Douglasville



Just a few miles west of downtown Atlanta, Douglasville is a welcoming city with a friendly, small-town atmosphere and entertainment that emulates big-town fun. While the city continues to grow, Douglasville uniquely preserves its signature hometown feel.



Within 5 Miles of Subject Property



78,713
Population



\$117,265
Average Household Income



27,318
Total Households



2,183
Businesses



30,871
Employees

Information contained herein has been obtained from sources deemed reliable but we cannot guarantee its accuracy. No liability is assumed for errors or omissions.

Riverside



New Mixed-Use Retail in Douglasville

3538 Highway 92, Douglasville, GA 30135

FOR MORE INFORMATION, PLEASE CONTACT:
Todd Semrau | 404-371-4100 | tsemrau@oakrep.com

