

# FOR LEASE



TAKE A  
VIRTUAL  
TOUR OF  
STE. 145

Suites From  
239 - 1,274 SF

## PROPERTY OVERVIEW

235 E. Ponce is an incredibly well-located, multi-tenant office building conveniently situated in the heart of downtown Decatur, GA. The property is within easy walking-distance of the myriad of restaurant, retail, mixed-use, and hotel offerings found throughout downtown Decatur's vibrant business district. 235 E. Ponce is less than ¼ mile from the Decatur MARTA rail station and enjoys frontage and visibility on both Sycamore Street and E. Ponce de Leon Avenue (the "Peachtree Street" of Decatur) along with abundant on-site parking.

## FEATURES

- » Conveniently located in the the heart of bustling downtown Decatur
- » Walk to a variety of diverse local restaurants and shops
- » 1/4 mile from Decatur MARTA station
- » Abundant on-site parking

## Downtown Decatur Office Building

235 E Ponce de Leon Ave.  
Decatur, GA 30030



**FOR MORE INFORMATION, PLEASE CONTACT**  
Bart Lester | 404-371-4100 | blester@oakrep.com



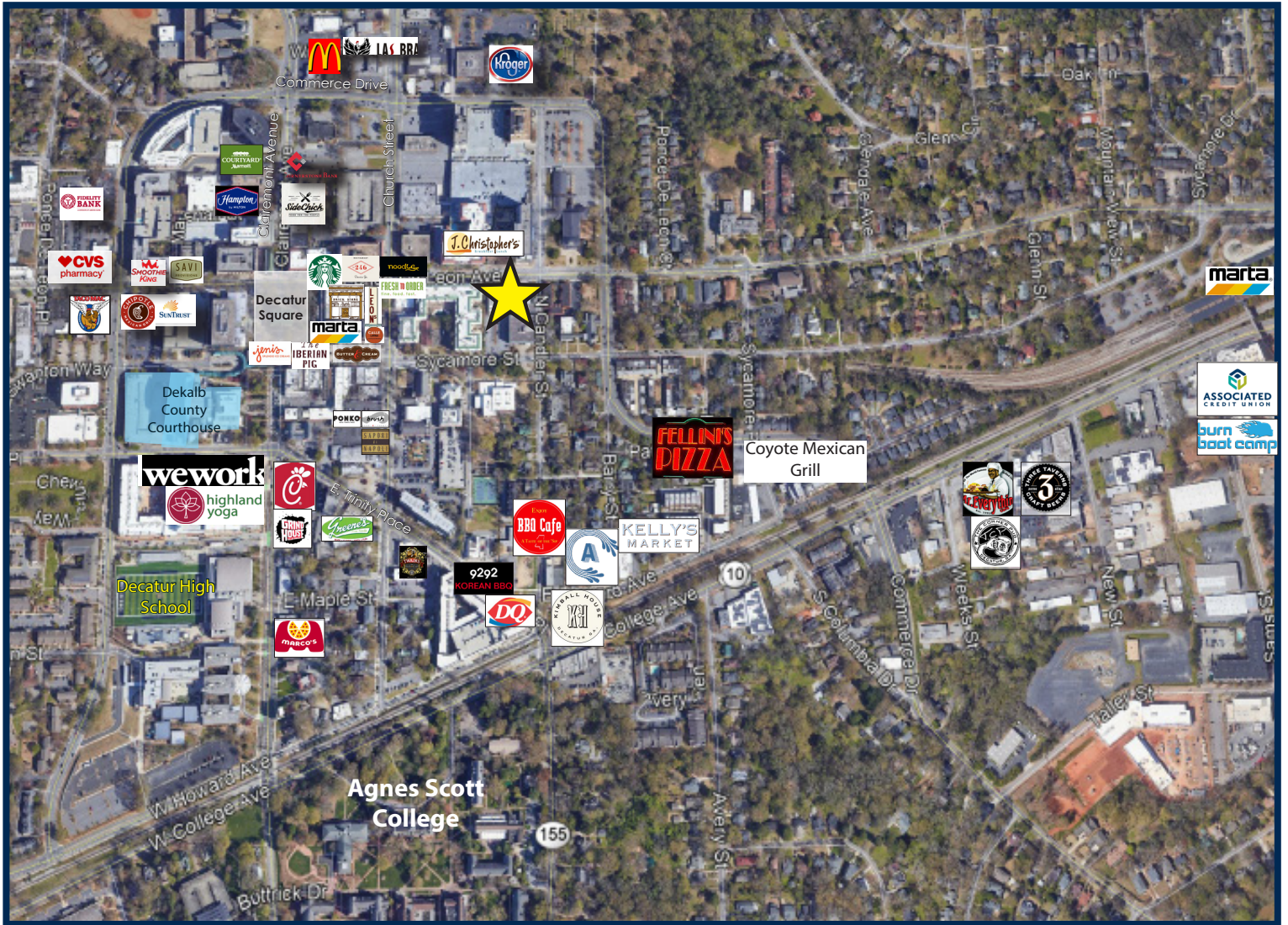
# FOR LEASE



OAKHURST  
REALTY  
PARTNERS

## Downtown Decatur Office Building

235 E Ponce de Leon Ave., Decatur, GA 30030



**FOR MORE INFORMATION:** Bart Lester 404-371-4100 | [blester@oakrep.com](mailto:blester@oakrep.com)

Information contained herein has been obtained from sources deemed reliable but we cannot guarantee its accuracy. No liability is assumed for errors or omissions.



# FOR LEASE



## Downtown Decatur Office Building

235 E Ponce de Leon Ave., Decatur, GA 30030



**FOR MORE INFORMATION:** Bart Lester 404-371-4100 | [blester@oakrep.com](mailto:blester@oakrep.com)

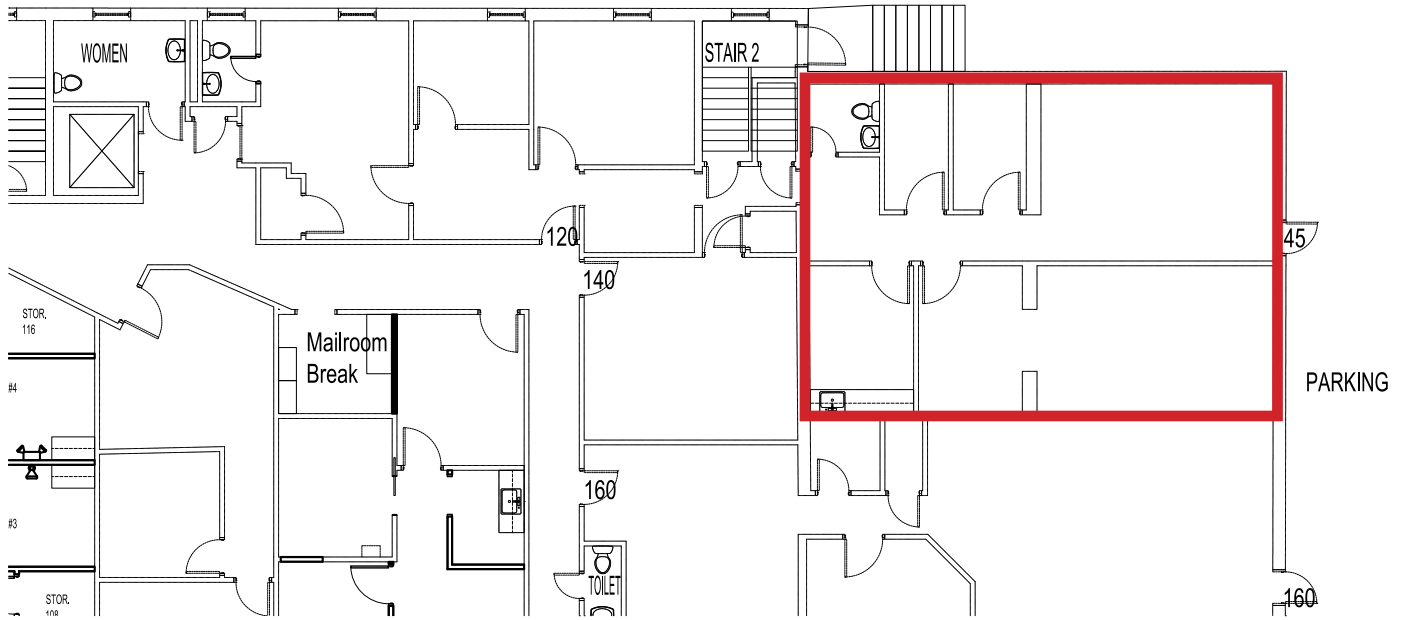
Information contained herein has been obtained from sources deemed reliable but we cannot guarantee its accuracy. No liability is assumed for errors or omissions.



# FOR LEASE

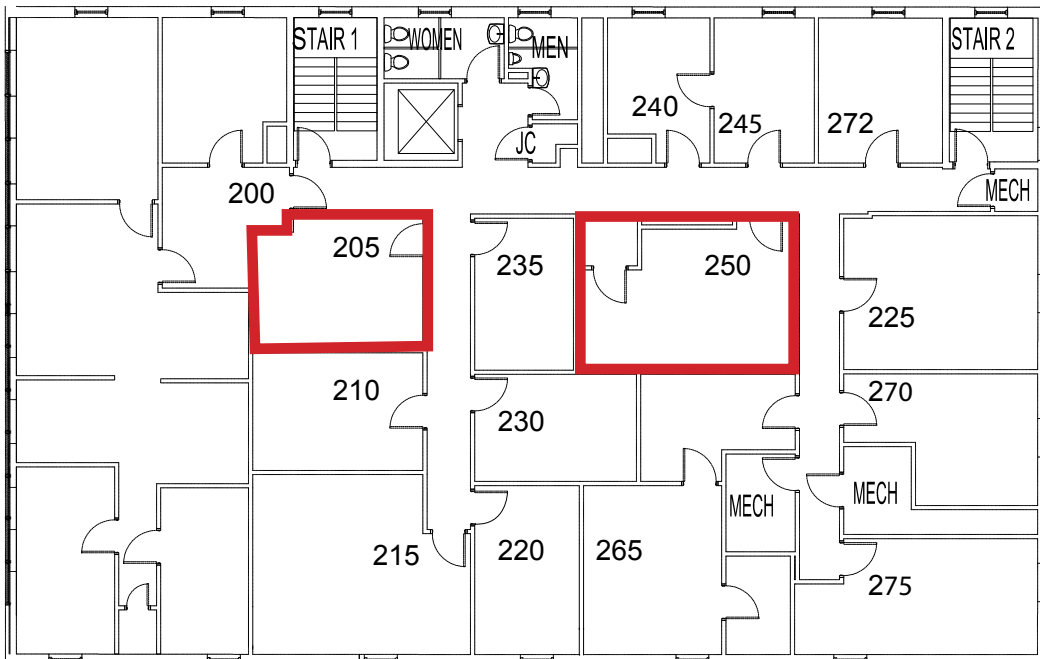


## Downtown Decatur Office Building



**1<sup>ST</sup> FLOOR**

Suite	RSF	Monthly Rent
145	1,274	\$3,200



**2<sup>ND</sup> FLOOR**

Suite	RSF	Monthly Rent
205	239	\$650
250 <sup>1</sup>	358	\$900

<sup>1</sup> Available June 1, 2025

**FOR MORE INFORMATION:** Bart Lester 404-371-4100 | [blester@oakrep.com](mailto:blester@oakrep.com)

Information contained herein has been obtained from sources deemed reliable but we cannot guarantee its accuracy. No liability is assumed for errors or omissions.